



REF: # 7148

CALPE/MORAIRA (MORAIRA CENTRO)



INFO

PREIS:	1.450.000 €
TYP EIGENTUM:	Villa
STADT:	Calpe/Moraira (Moraira centro)
SCHLAFZIMMER:	4
BADEZIMMER:	5
GEBAUT (m2):	411
GRUNDSTÜCK (m2):	922
TERRASSE (m2):	48
JAHR:	2020
ETAGEN:	3
Nachricht	1.225.000 €



BESCHREIBUNG

New luxury Villa offering sea views and pleasant open views towards Moraira, very well located in a quiet neighbourhood just 2.5 km from the beaches and the centre. This lovely and modern Villa consists in the underground floor of 1 bedroom, ensuite bathroom, guest toilet, kitchen and spacious lounge which leads to the covered terraces leading to the pool area and the surrounding 48m2 terrace on the main living area. Internal staircases lead to the first floor where there are 3 double bedrooms each with its own bathroom and two open terraces with a total of both of 22m2. In the semi-basement there is a large garage of 44m2 and outside there is a carport and plenty of space to park several vehicles. EXTRAS: Technal carpentry with safety glass, complete kitchen with Siemens electrical appliances, complete Roca brand bathrooms and taps, LED lighting, aerothermal system for hot water and underfloor heating, air conditioning through ducts (cold and hot) throughout the house, solar panels, built-in wardrobes, electric blinds, internal alarm, pre-installation of external alarm and security cameras. Rectangular overflowing pool EXTRAS: technal carpentry with safety glass, complete

kitchen with Siemens electrical appliances, complete Roca brand bathrooms and taps, LED lighting, aerothermal system for hot water and underfloor heating, air conditioning by ducts (cold and heat) throughout the house, solar panels, built-in wardrobes, electric blinds, interior alarm, pre-installation of external alarm and security cameras. Rectangular overflowing swimming pool of 12x4,5 meters, barbecue area of 22m2, laundry, completed garden. Automatic gates. Energy classification A. South-facing



STIL	KLIMAAANLAGE	ENTFERNUNG :	ORIENTIERUNG
<ul style="list-style-type: none">• Modern	<ul style="list-style-type: none">• Zentral	Strand : 2 Km Flughafen: 70 Km Stadtzentrum : 1 Km	Süd
MÖBEL	PARKPLATZ	WOHNFLÄCHE	FLOORING
<ul style="list-style-type: none">• unmöbliert	Garage Anzahl Autos : 1 Parkplatz Anzahl Autos: 2	<ul style="list-style-type: none">• En-suite Bad	<ul style="list-style-type: none">• Kachelboden
KÜCHE	GARTENTERRASSEN	HEIZUNG	EXTRA
<ul style="list-style-type: none">• Offene Küche• Ausgestattet	<ul style="list-style-type: none">• überdachte Terrasse• offene Terrasse• Aussenbeleuchtung• Automatische Bewässerungsanlage• Obstbäume• Palmen• angelegt• umzäunt• Natursteinmauern• elektr. Tor• Grillplatz	<ul style="list-style-type: none">• Zentralheizung Gas• Fussbodenheizung• Fussbodenhz. Bäder	<ul style="list-style-type: none">• Einbauschränke• Alarm• Stahltür• Doppelverglasung• Lagerraum• Waschraum

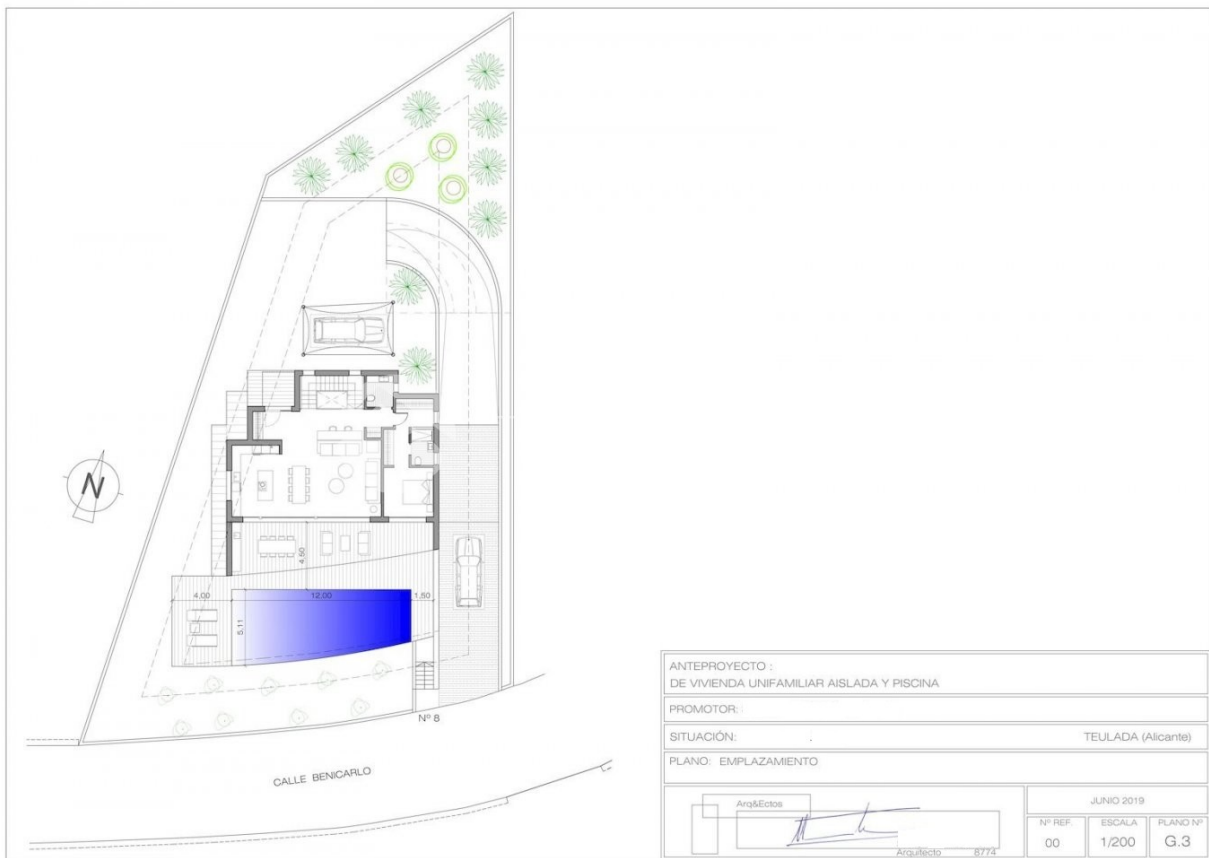


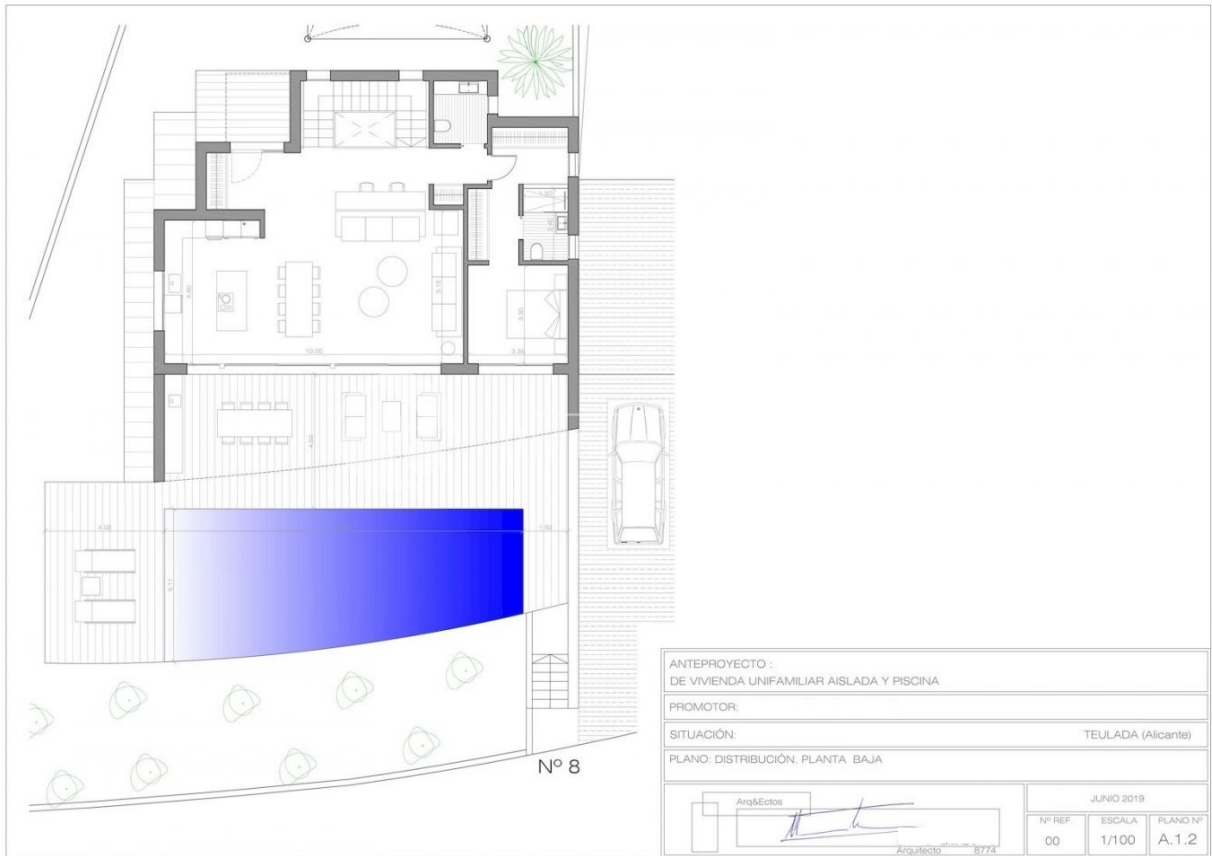


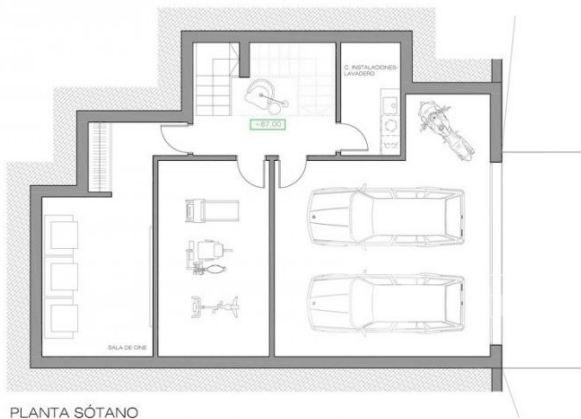












PLANTA SÓTANO

PROYECTO BÁSICO : DE VIVIENDA UNIFAMILIAR AISLADA Y PISCINA								
PROMOTOR:								
SITUACIÓN:		TEULADA (Alicante)						
PLANO: DISTRIBUCIÓN. PLANTA SÓTANO								
<div>Arq&Ectos</div> <div></div> <div>Arquitecto 8774</div>		<div>JULIO 2019</div> <table><tr><td>Nº REF.</td><td>ESCALA</td><td>PLANO Nº</td></tr><tr><td>338</td><td>1/100</td><td>A.1.1</td></tr></table>	Nº REF.	ESCALA	PLANO Nº	338	1/100	A.1.1
Nº REF.	ESCALA	PLANO Nº						
338	1/100	A.1.1						

"OUR EXPERIENCE IS YOUR GUARANTEE"