



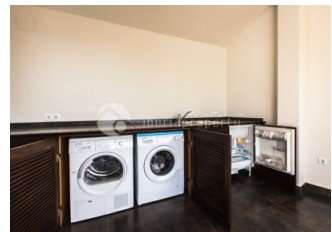
REF: # 3229

ALTEA (ALTEA LA VELLA)



#### INFO

PREIS:	645.000 €
TYP EIGENTUM:	Reihenhaus
STADT:	Altea (Altea La Vella)
SCHLAFZIMMER:	3
BADEZIMMER:	3
GEBAUT ( m2 ):	240
GRUNDSTÜCK ( m2 ):	-
TERRASSE ( m2 ):	-
JAHR:	2012
ETAGEN:	3
Nachricht	-



#### BESCHREIBUNG

This modern townhouse in the pretty town of Altea la Vella, has been designed according to the German building standards and was completed in 2012. The 3-level building with attic has the private garage next to the entrance and the Spanish patio/courtyard on the same floor. On the first floor are the 3 bedrooms with built in closets and their with bathroom en-suite. On the second floor is the spacious living area with log-fireplace, open plan kitchen with BOSCH equipment and separate dining corner and an open terrace with street view. On the top floor is the sun lounge terrace with awnings and a summer kitchen and beautiful views. This building is a ferroconcrete construction with massive brick walls with a high-class execution and has a high insulation in walls, double glazed windows, air conditioning, real oak parquet floor in bedrooms, oil-fired central heating with radiators, solar energy and much more which we will show you during the visit. Next to the main house with a possibility to make a connection between the two, is an independent office of 60 m2 with kitchenette and bathroom designed in

the same style and use of materials. A very unique house for a special client.



<b>STIL</b> <ul style="list-style-type: none"><li>• Modern</li><li>• Klassisch</li></ul>	<b>KLIMAAANLAGE</b> <ul style="list-style-type: none"><li>• Wohnraum</li><li>• Schlafzimmer</li></ul>	<b>ENTFERNUNG :</b> <div>Strand : 1 Km</div> <div>Flughafen: 50 Km</div> <div>Stadtzentrum : 100 m</div>	<b>ORIENTIERUNG</b> <div>Südwest</div>
<b>MÖBEL</b> <ul style="list-style-type: none"><li>• unmöbliert</li></ul>	<b>PARKPLATZ</b> <div>Garage Anzahl Autos : 1</div>	<b>WOHNFLÄCHE</b> <ul style="list-style-type: none"><li>• En-suite Bad</li></ul>	<b>FLOORING</b> <ul style="list-style-type: none"><li>• Parkettboden</li><li>• Steinboden</li></ul>
<b>KÜCHE</b> <ul style="list-style-type: none"><li>• Offene Küche</li><li>• Ausgestattet</li><li>• Granitarbeitsfläche</li></ul>	<b>GARTENTERRASSEN</b> <ul style="list-style-type: none"><li>• überdachte Terrasse</li><li>• offene Terrasse</li><li>• Aussenküche</li></ul>	<b>HEIZUNG</b> <ul style="list-style-type: none"><li>• Ölheizung</li><li>• Heizkörper</li><li>• Holzkamin</li></ul>	<b>EXTRA</b> <ul style="list-style-type: none"><li>• Einbauschränke</li><li>• Stahltür</li><li>• Doppelverglasung</li><li>• Türklingel mit Kamera</li><li>• Waschraum</li></ul>



































***"OUR EXPERIENCE IS YOUR GUARANTEE"***