

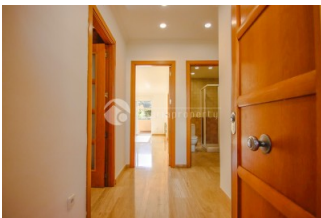


REF: # 13324

ALBIR (ALBIR CENTRO)



INFO	
PREIS:	380.000 €
TYP EIGENTUM:	Appartment
STADT:	Albir (Albir centro)
SCHLAFZIMMER:	2
BADEZIMMER:	2
GEBAUT ( m2 ):	90
GRUNDSTÜCK ( m2 ):	-
TERRASSE ( m2 ):	-
JAHR:	2005
ETAGEN:	1
Nachricht	-



### BESCHREIBUNG

Located in La Mina Residential Complex, this apartment stands out for its prime location right in the centre of El Albir, with all amenities close by (supermarkets, restaurants, pharmacies, public transport, shops...) and just a 2-minute walk to the beach. With a south-east facing orientation, the property enjoys excellent natural light and sunshine, making it comfortable all year round. Layout: Entrance hall Separate kitchen Full bathroom for general use Spacious, bright living-dining room with access to the terrace Large terrace/balcony, perfect for enjoying the sun and Mediterranean weather Master bedroom with en-suite bathroom for added privacy and comfort In addition, the complex offers a communal swimming pool, a heated indoor pool for winter, and green areas. The building also has a lift. Ideal as a permanent home, holiday apartment, or investment in one of the most sought-after areas of the Costa Blanca.

### ENERGETIC CERTIFIED



<b>STIL</b>	<b>ANSICHTEN</b>	<b>KLIMAAANLAGE</b>	<b>ENTFERNUNG :</b>
<ul style="list-style-type: none"> <li>• Klassisch</li> <li>• Mediterran</li> </ul>	<ul style="list-style-type: none"> <li>• Panorama</li> <li>• Bergblick</li> </ul>	<ul style="list-style-type: none"> <li>• Wohnraum</li> <li>• Küche</li> <li>• Schlafzimmer</li> </ul>	Strand : 200 m <hr/> Flughafen: 40 Km <hr/> Stadtzentrum : 50 m
<b>ORIENTIERUNG</b>	<b>MÖBEL</b>	<b>PARKPLATZ</b>	<b>STEUERN</b>
Südost	<ul style="list-style-type: none"> <li>• unmöbliert</li> </ul>	Garage Anzahl Autos : 1	Gemeinschaftskosten : 80 € I.B.I : 300 €
<b>FLOORING</b>	<b>KÜCHE</b>	<b>GARTENTERRASSEN</b>	<b>HEIZUNG</b>
<ul style="list-style-type: none"> <li>• Marmorboden</li> </ul>	<ul style="list-style-type: none"> <li>• geschlossene Küche</li> <li>• Ausgestattet</li> <li>• Granitarbeitsfläche</li> </ul>	<ul style="list-style-type: none"> <li>• offene Terrasse</li> <li>• Aussenbeleuchtung</li> <li>• Obstbäume</li> <li>• Palmen</li> <li>• Spielplatz</li> <li>• Natursteinmauern</li> <li>• Gemeinschaftsgarten</li> </ul>	<ul style="list-style-type: none"> <li>• Zentralheizung elektr.</li> <li>• Heizkörper</li> </ul>
<b>EXTRA</b>			
<ul style="list-style-type: none"> <li>• Einbauschränke</li> <li>• Stahltür</li> <li>• Doppelverglasung</li> <li>• Satellitenfernsehen</li> <li>• Fahrstuhl</li> <li>• Internet</li> </ul>			























***"OUR EXPERIENCE IS YOUR GUARANTEE"***