



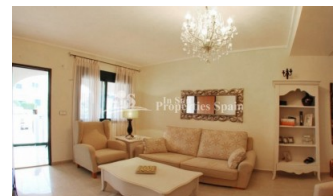
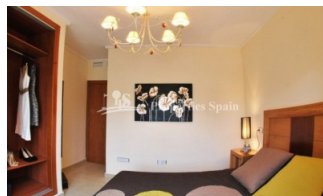
REF: # 4689

QUESADA-ROJALES (DONA PEPA)



#### INFO

PREIS:	169.900 €
TYP EIGENTUM:	Reihenhaus
STADT:	Quesada-Rojales (Dona Pepa)
SCHLAFZIMMER:	2
BADEZIMMER:	2
GEBAUT ( m2 ):	82
GRUNDSTÜCK ( m2 ):	-
TERRASSE ( m2 ):	-
JAHR:	-
ETAGEN:	-
Nachricht	-

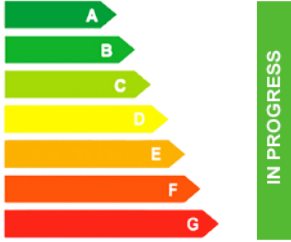


#### BESCHREIBUNG

This is a lovely 2 bedroom 82m2 'Fortuna Model' Townhouse with 35m2 garden situated within a completely gated community located in DONA PEPA, close to CIUDAD QUESADA with a main entrance and exit. There are three main swimming pools and two additional pools for children. One of the main pools also has a Jacuzzi and hydro massage jet. There is an ample parking throughout the residential, however there is also a private parking space in the underground car park of the residential. The property is located close to the Playpark and Health centre within Doña Pepa, which is a modern urbanisation belonging to Ciudad Quesada and has all the amenities which include supermarkets, bars, hotel and shops as well as a bank. Ciudad Quesada town centre is a ten minute walk from Doña Pepa. In Ciudad Quesada itself you will find international supermarkets, restaurants, banks, a medical centre as well as a water park. The property is ideally located if you are a golf enthusiast, with La Marquesa Golf Club just a five minute drive away. The nearest beaches are at Guardamar/Campomar and La Mata ten minutes drive away.

\*Furnishings at an additional cost Nearest Airports: San Javier (Murcia) -  
Approx 30 minute drive Alicante Airport - Approx 30 minute drive



STIL	ANSICHTEN	ENTFERNUNG :	ORIENTIERUNG
<ul style="list-style-type: none"> <li>Mediterran</li> </ul>	<ul style="list-style-type: none"> <li>Panorama</li> </ul>	Strand : +10 Km Flughafen: 40 Km Stadtzentrum : 1 Km	Südwest
MÖBEL	PARKPLATZ	FLOORING	KÜCHE
<ul style="list-style-type: none"> <li>Möbliert</li> <li>unmöbliert</li> </ul>	Garage Anzahl Autos : 1 Parkplatz Anzahl Autos: 1	<ul style="list-style-type: none"> <li>Kachelboden</li> <li>Steinboden</li> </ul>	<ul style="list-style-type: none"> <li>Offene Küche</li> <li>Ausgestattet</li> </ul>
GARTENTERRASSEN	EXTRA	ENERGETIC CERTIFIED	
<ul style="list-style-type: none"> <li>überdachte Terrasse</li> <li>offene Terrasse</li> <li>Spielplatz</li> <li>angelegt</li> <li>Privater Garten</li> <li>Gemeinschaftsgarten</li> </ul>	<ul style="list-style-type: none"> <li>Einbauschränke</li> <li>Stahltür</li> <li>Doppelverglasung</li> </ul>	 <p>The image shows a vertical energy efficiency scale with seven horizontal bars labeled A through G. The bars are colored in a gradient from green at the top to red at the bottom. Bar A is green, B is green, C is light green, D is yellow, E is orange, F is red-orange, and G is red. To the right of these bars is a vertical green bar with the text 'IN PROGRESS' written vertically inside it.</p>	

**"OUR EXPERIENCE IS YOUR GUARANTEE"**