



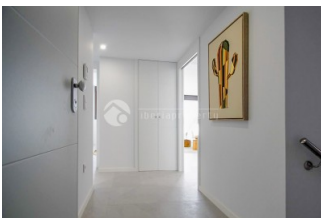
REF: # 13114

FINESTRAT (FINESTRAT HILLS)



INFO

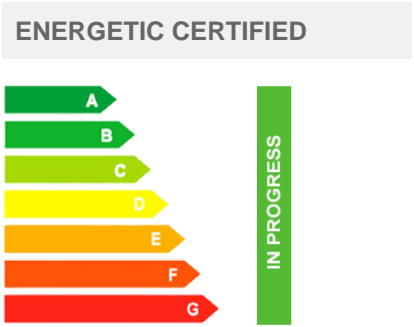
PREIS:	440.000 €
TYP EIGENTUM:	Apartment
STADT:	Finestrat (Finestrat Hills)
SCHLAFZIMMER:	2
BADEZIMMER:	2
GEBAUT ( m2 ):	261
GRUNDSTÜCK ( m2 ):	305
TERRASSE ( m2 ):	-
JAHR:	
ETAGEN:	1
Nachricht	-




BESCHREIBUNG

Apartment located in the well-known Seascape Blue development in Finestrat, a growing area that combines nature, open views, and excellent connections to all the region's services. The property stands out for its modern design, functional layout, and multiple possibilities—ideal as a permanent residence, second home, or investment. Comfortable and bright layout The apartment consists of: 2 spacious bedrooms, one with en-suite bathroom 2 full bathrooms with modern finishes Large and bright living-dining room with open-plan, fully equipped kitchen Generous private terrace, perfect for enjoying the outdoors, dining in the sun, or relaxing with open views Versatile lower level On the lower floor of the apartment, you'll find a spacious, internally connected area with great potential to be adapted as: A leisure zone (games room, home cinema, personal gym... ) An office, studio, or extra bedroom Or simply as additional storage and comfort space Premium community with full services Seascape Blue offers top-quality communal

facilities, designed for the whole family and for year-round enjoyment:  
Outdoor pool and heated indoor pool Fully equipped gyms Tennis court  
Playgrounds and children's areas Landscaped gardens and well-  
maintained surroundings Strategic location 5 minutes from La Marina  
Shopping Centre with supermarkets, shops, restaurants, and all services  
10 minutes from Benidorm's beaches and town centre Close to golf  
courses and natural areas ideal for outdoor sports."



STIL	ANSICHTEN	KLIMAAANLAGE	ENTFERNUNG :
<ul style="list-style-type: none"> <li>• Modern</li> <li>• Klassisch</li> </ul>	<ul style="list-style-type: none"> <li>• Panorama</li> <li>• Bergblick</li> </ul>	<ul style="list-style-type: none"> <li>• Zentral</li> </ul>	<div>Strand : 2 Km</div> <div>Flughafen: 30 Km</div> <div>Stadtzentrum : 2 Km</div>
MÖBEL	PARKPLATZ	FLOORING	KÜCHE
<ul style="list-style-type: none"> <li>• Möbliert</li> </ul>	<div>Garage Anzahl Autos : 1</div>	<ul style="list-style-type: none"> <li>• Steinboden</li> </ul>	<ul style="list-style-type: none"> <li>• Offene Küche</li> <li>• Ausgestattet</li> </ul>
GARTENTERRASSEN	HEIZUNG	EXTRA	ENERGETIC CERTIFIED
<ul style="list-style-type: none"> <li>• offene Terrasse</li> <li>• Aussenbeleuchtung</li> <li>• Tennisplatz</li> <li>• Obstbäume</li> <li>• Palmen</li> <li>• Spielplatz</li> <li>• umzäunt</li> <li>• Natursteinmauern</li> <li>• Aussenküche</li> <li>• Grillplatz</li> <li>• Paddletennis</li> <li>• Privater Garten</li> <li>• Gemeinschaftsgarten</li> </ul>	<ul style="list-style-type: none"> <li>• Zentralheizung elektr.</li> <li>• Fussbodenhz. Bäder</li> </ul>	<ul style="list-style-type: none"> <li>• Stahltür</li> <li>• Doppelverglasung</li> <li>• Türklingel mit Kamera</li> <li>• Satellitenfernsehen</li> <li>• Waschraum</li> <li>• Fahrstuhl</li> <li>• Internet</li> <li>• Hausmeister</li> </ul>	 <p>The image shows a vertical energy efficiency scale with seven horizontal bars labeled A through G. Bar A is dark green, B is green, C is light green, D is yellow, E is orange, F is red-orange, and G is red. To the right of these bars is a vertical green bar with the text 'IN PROGRESS' written vertically.</p>

**"OUR EXPERIENCE IS YOUR GUARANTEE"**